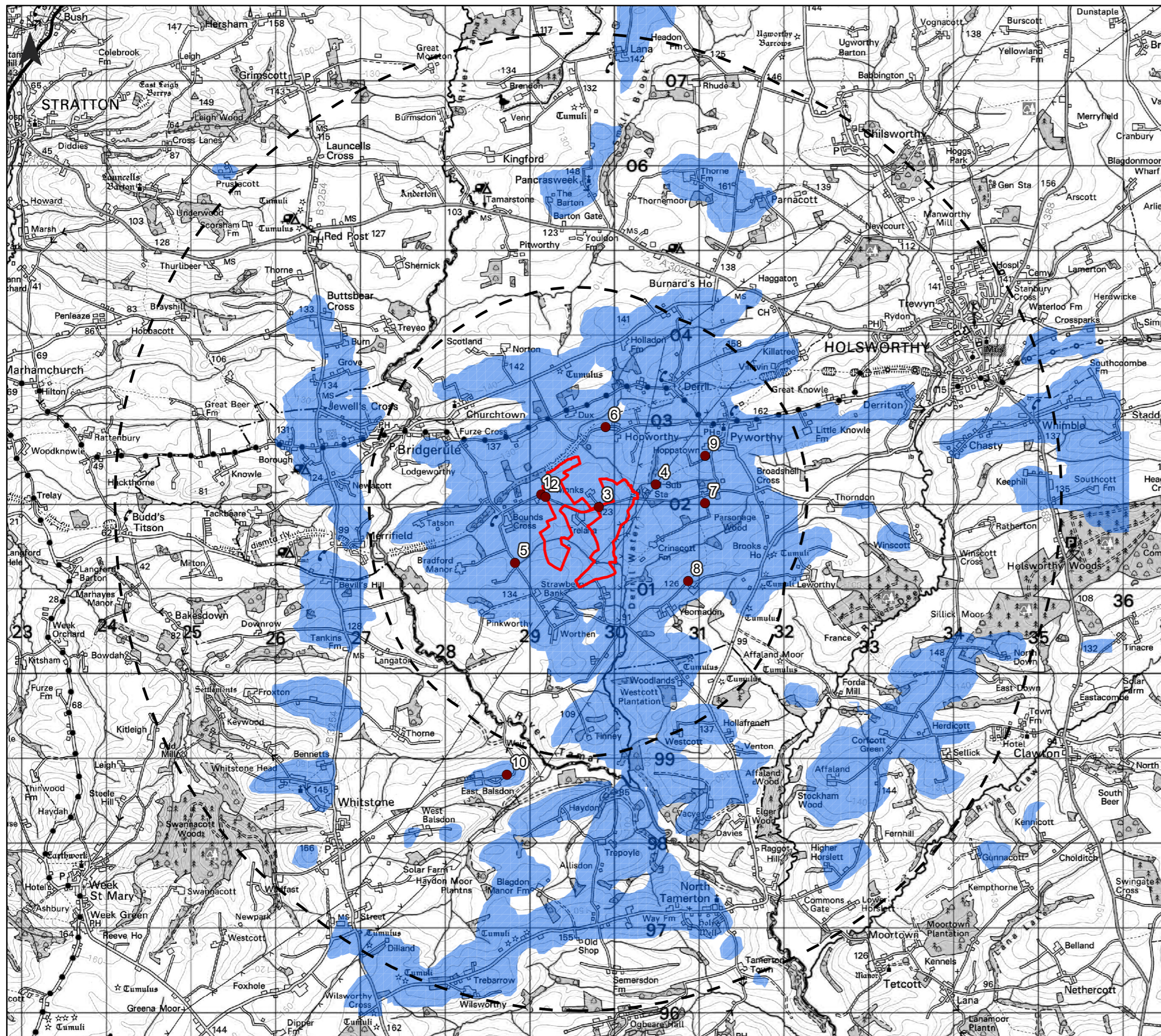


Derril Water Solar Farm Viewpoint Locations with Zone of Theoretical Visibility Figure 1.3a



Key

- Development Boundary
- 2km, 5km Study Area
- Viewpoint Locations
- Zone of Theoretical Visibility (ZTV)

Note:

ZTV generated based on a combination of the Application Site's detailed topographical survey and OS terrain data of the surrounding area, with the viewer height set at 2m. Analysis points for the solar panels are set at 2.8m. The ZTV does not account for any elements in the landscape such as trees, hedgerows, walls or buildings that may help screen views.

Neo Office Address:
Cinnamon House, Crab Lane, Warrington, WA2 0XP

