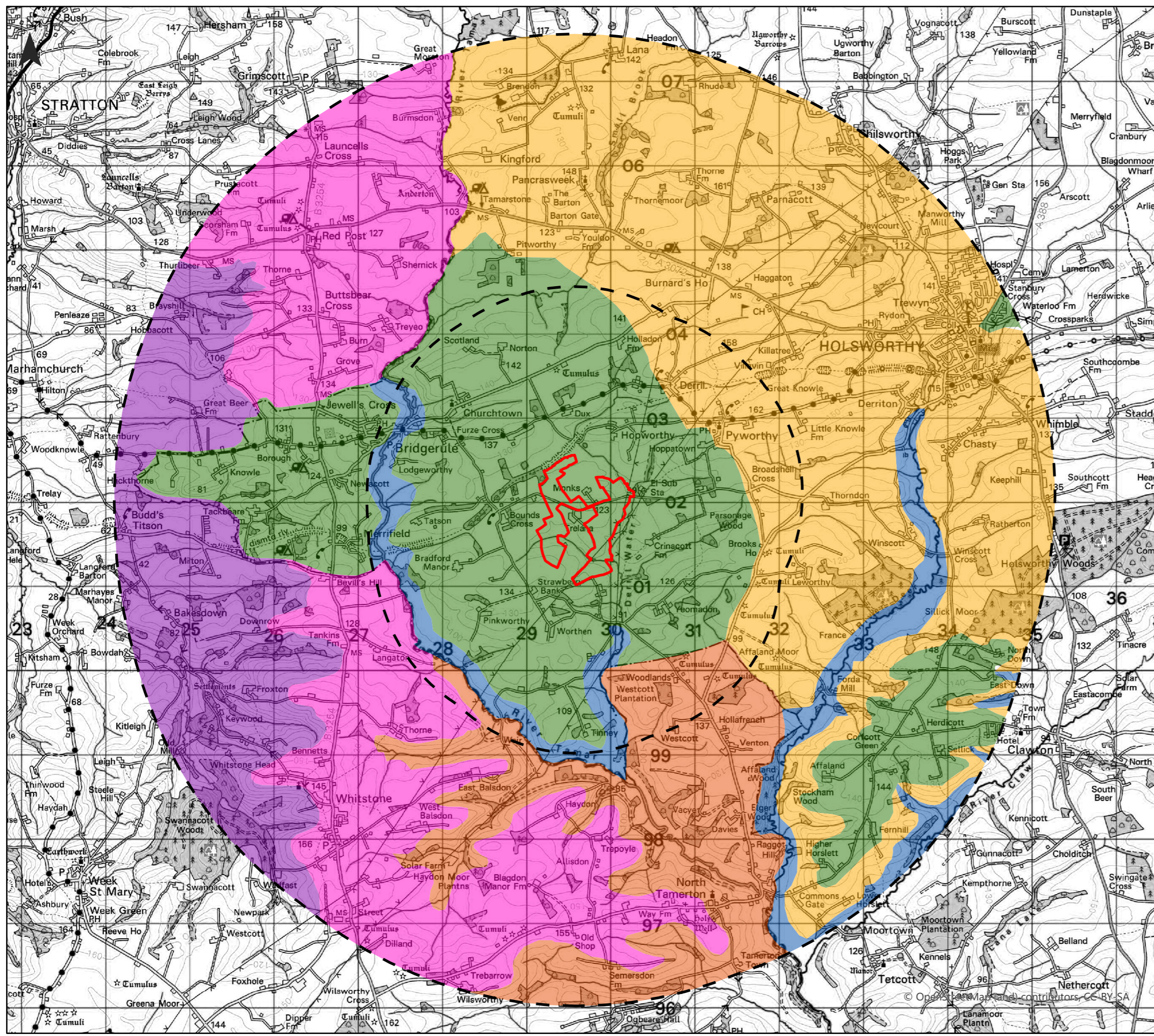










Derril Water Solar Farm Landscape Character Areas/ Types Figure 1.1



Key

-  Development Boundary
-  2km, 5km Study Area
- Cornwall Landscape Character Areas**
-  CA31 - Upper Tamar & Ottery Valleys
-  CA37 - Western Culm Plateau
-  CA38 - Bude Basin
- Torridge Landscape Character Types**
-  5A - Inland Elevated Undulating Land
-  1F - Farmed Lowland Moorland & Culm Grassland
-  3C - Sparsely Settled Farmed Valley Floors

Note:

Landscape character data indicated from the Joint Local Landscape Character Assessment for North Devon & Torridge District Council November 2010 and the Cornwall Council Landscape Character Assessment for North Devon and Torridge Districts November 2010.

Neo Office Address:
Cinnamon House, Crab Lane, Warrington, WA2 0XP



Date: 25/01/2021
Drawn By: Jamie McGhee
Scale (A3): 1:45,000
Drawing No: NEO00738/045/A



© OpenStreetMap (and) contributors, CC-BY-SA