

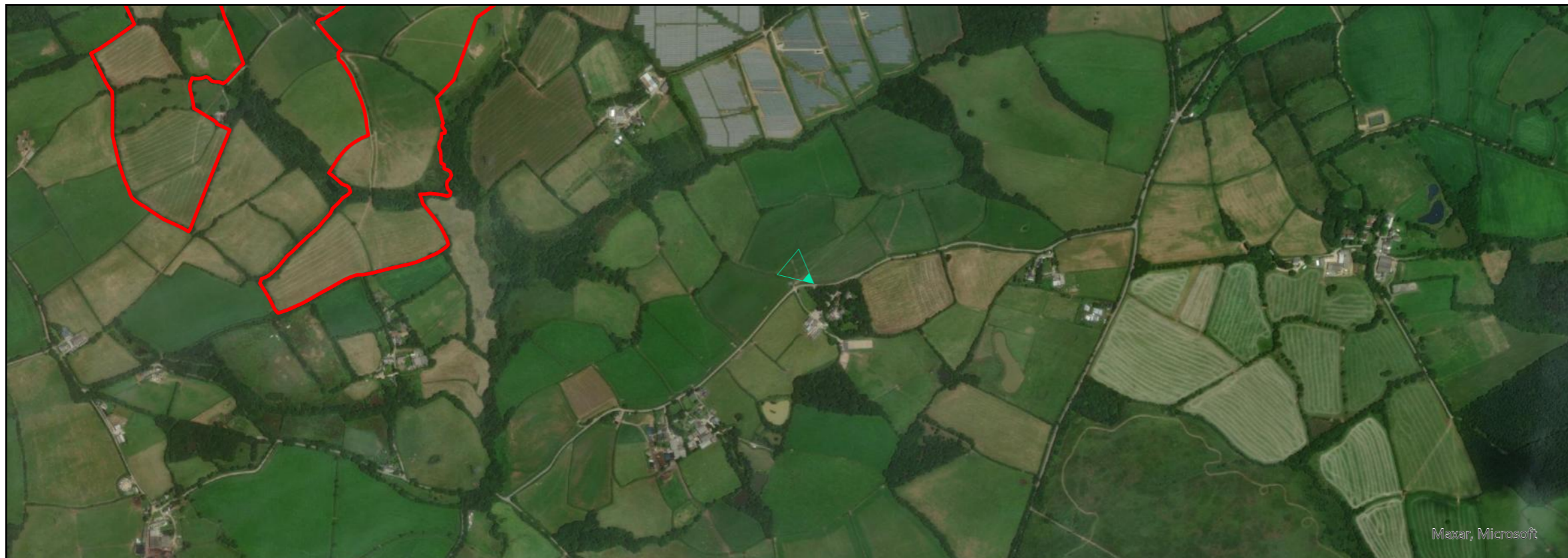
Extent of Proposed Development within view

Partial views into Fields 18, 19, 22 & 23



Figure 1.11a

Viewpoint 8: PRow near minor north East Yeomadon Farm



OS Reference: E230865 N101093
Eye Level: 124.5m
Direction of View: 300°
Distance to Site: 0.800km

Horizontal Field of View: 90 Degrees
Vertical Field of View: 18.2 Degrees
Paper Size (A3): 420x270mm

Camera: Canon 6D
Lens: 50mm
Camera Height: 1.5m AGL
View flat at comfortable arm's length

Date: 29/09/2020 11.52
Drawn By: Jamie McGhee
Drawing No.: NEO00783/0561/A

